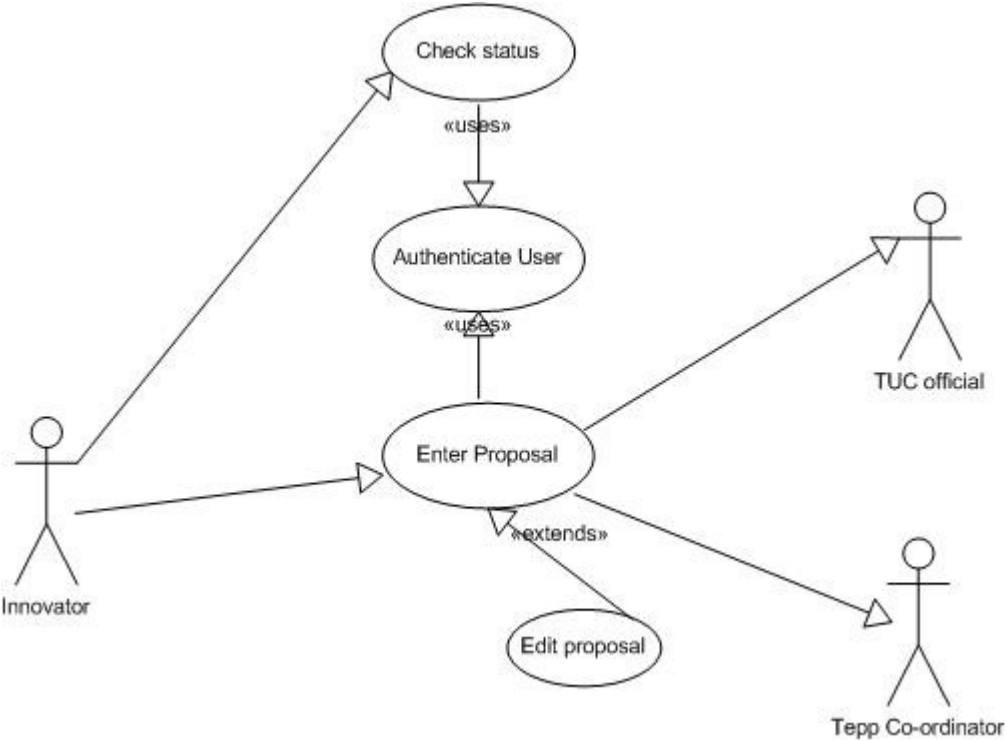


TePP – UML Use-Case Diagrams & Descriptions

1) Use-Cases for Innovators



Detailed description

1. Enter Proposal

Basic Flow:

1. The use case starts when the Innovator click on the “Start Online Registration” from the system menu.
2. The system displays Login-in screen.
3. Innovator enters user-id and password.
4. System Authenticate user {using} Authenticate User use case and displays section wise application form.
5. Innovator enters the details.
6. System validate Innovator information {using} Validate Innovator Subflow and saves the details.
7. Innovator Uploads scanned image files.
8. Innovator previews the complete application and confirm it.
9. Innovator Log-out from the system.

Subflow : Validate Innovator

1. System validates Innvator information.
2. System validates other mandatory information.

Alternate Flow:

A1. Download proposal format and upload the filled in form

1. Innovator downloads the proposal format and upload it
2. Resume Basic Flow at {7}

A2. Download Application form

A2.a

1. The Innovator downloads and print the application form
2. Innovator Email the application along with documents to nearest Outreach center

A2.b

1. The Innovator downloads and print the application form
2. Innovator post (Registered Post/Speed Post) the application along with documents to nearest Outreach center.

Exceptions:

4. User not Authenticated

System allows Re-entry of user-id and password maximum 3 times, then logs the user out.

2 . Check Status

Basic Flow:

1. The use case starts when the Innovator click on the “Check Status” from the system menu.
2. Innovator enters the proposalcode
3. System authenticate it.
4. System shows the status of the proposal.

PreConditions :

1. User logged in

Exceptions:

3. Invalid proposalcode
 - a. System allows re-entry of proposal code.
 - b. Resume basic flow at {4}

3.Change Password

Basic Flow:

1. The use case starts when the Innovator click on the “Change password” from the system menu.
2. User is prompted for old password, new password and confirms new password
3. Web-portal does authentication
- 4.New password is accepted

PreConditions:

1. Innovator logged in

Exceptions:

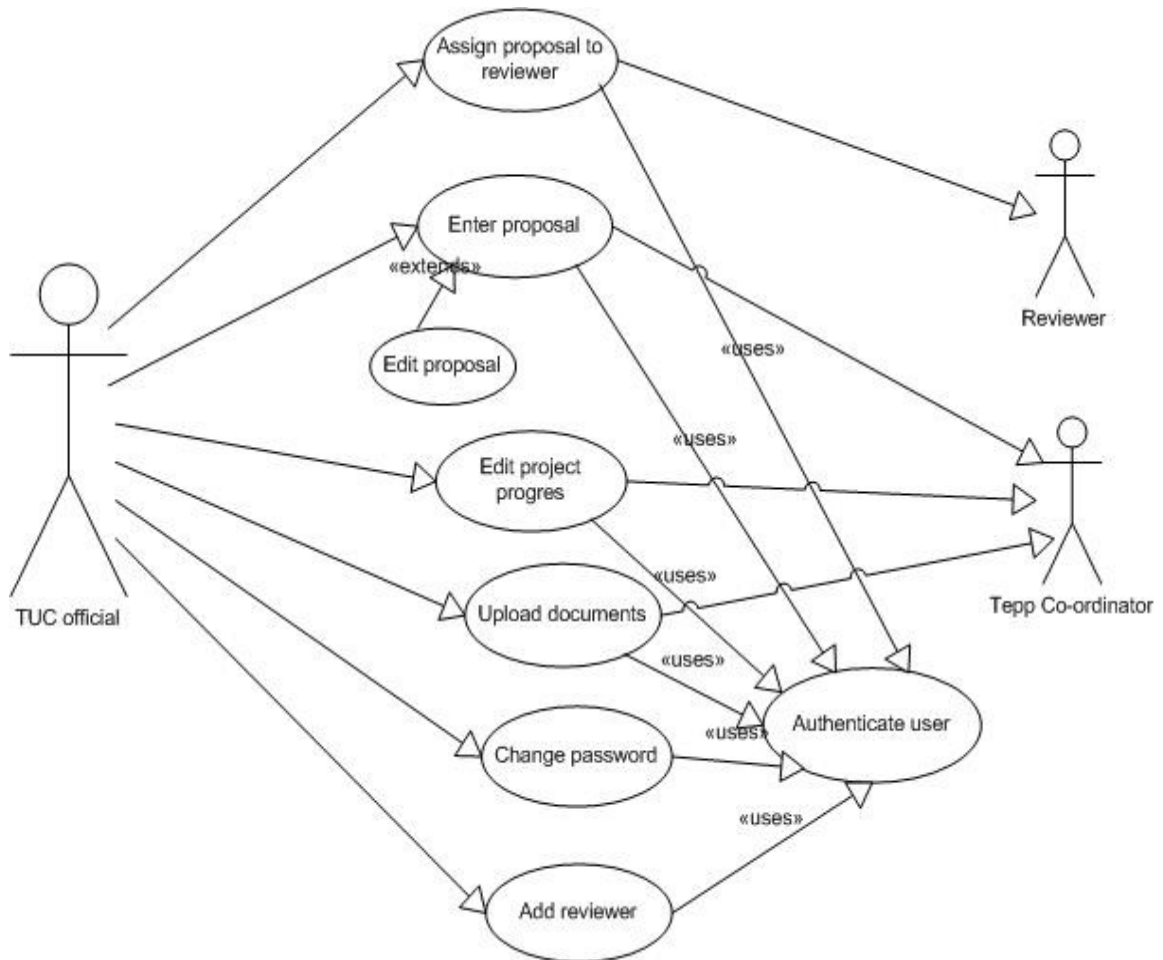
2.a. Authorization fails

- 1.Informs that user has typed the wrong password
- 2.Allows to re-enter the password
- 3.Resume basic flow {4}

2.b. New password and confirm new password does not match

- 1.Allows to re-enter the attributes
- 2.Resume basic flow at {4}

2) Use-Cases for TUC



Detailed description

1. Enter Proposal

Basic Flow:

1. The use case starts when the TUC staff selects Enter proposal from system menu.
2. System displays proposal entry screen.
3. TUC staff enters proposal details.
4. System validates proposal information {using} Validate proposal subflow.
5. System displays confirmation screen.
6. TUC staff confirms entered proposal details.
7. System saves proposal

PreConditions:

1. TUC staff has ready access to system through their machine.
2. TUC staff already logged in.

Subflow : Validate proposal

1. System validates mandatory informations.

2. Assign proposal to reviewers

Basic Flow:

1. The use case starts when the TUC staff selects Assign proposal to reviewer from system menu.
2. System displays list of proposals .
3. TUC staff selects a proposal and assign proposal to reviewer(s) from the list of reviewers.
4. System displays confirmation screen.

5. TUC staff confirms assignment.
6. System saves assignment.

PreConditions

1. TUC staff has ready access to system through their machine.
2. TUC staff already logged in.

Alternate Flow

A1. There is no suitable reviewer in the reviewer list

1. TUC staff informs HTePP through mail.
2. System displays mail form with address line , subject and message body.
3. TUC staff edit message body and send mail to HTePP.

3. Edit Project Progress

Basic Flow:

1. The use case starts when the TUC staff selects Edit project status from system menu.
2. System displays list of projects with edit project status.
3. TUC staff edits project status.
4. TUC staff confirms assignment.
5. System saves assignment.

4. Add Reviewer

Basic Flow:

- 1.The use case starts when the TUC staff click on the “Add Reviewer” from

the system menu.

2.TUC staff enters the reviewer details

3.System does the validation.

4.System saves the details.

PreConditions:

1. TUC staff logged in.

5. Change Password

Basic Flow:

1. The use case starts when the TUC staff click on the “Change password” from the system menu.
2. User is prompted for old password, new password and confirms new password
3. Web-portal does authentication
4. New password is accepted

PreConditions:

1. TUC staff logged in

Exceptions:

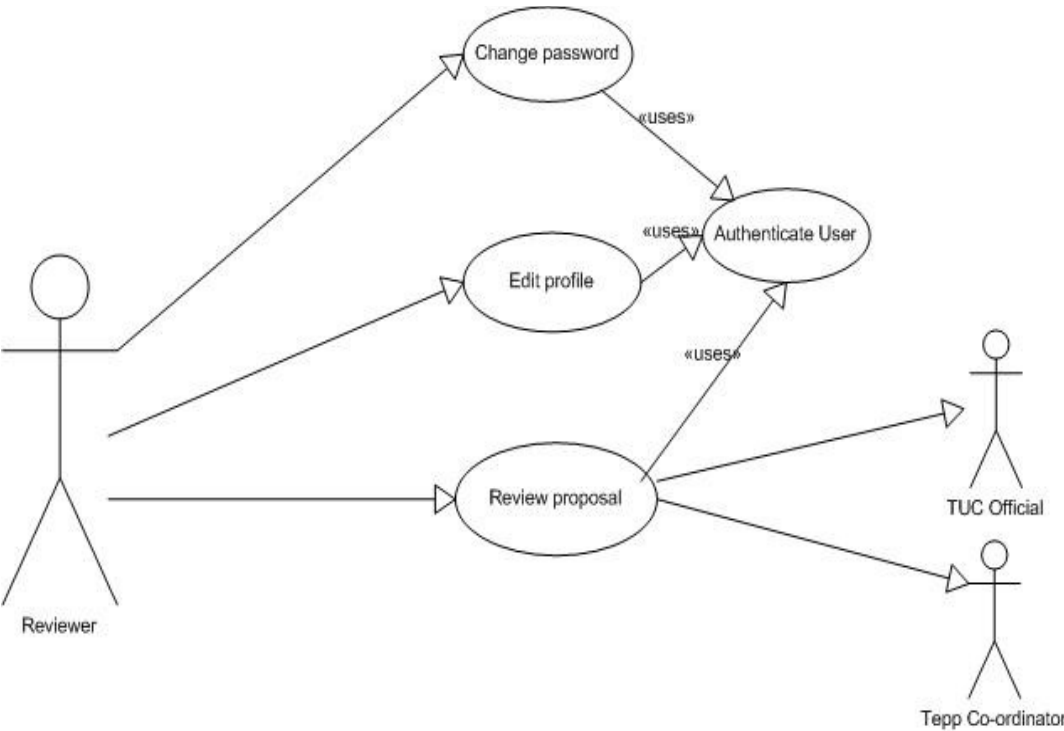
2.a. Authorization fails

- 1.Informs that user has typed the wrong password
- 2.Allows to re-enter the password
- 3.Resume basic flow {4}

2.b. New password and confirm new password does not match

- 3.Allows to re-enter the attributes
- 4.Resume basic flow at {4}

3)Use-Cases for Reviewers



Detailed description

1.Review Proposal

Basic Flow:

- 1.The use case starts when the Reviewer click on the Review Proposal ” from the system menu.
- 3.Reviewer enters the comments.
- 4.System does the validation.
- 5.System saves the details.

Pre-condition:

User logged in.

2. Change password

Basic Flow:

1. The use case starts when the Reviewer click on the Change password” from the system menu.
2. User is prompted for old password, new password and confirms new password
3. System does the authentication
- 10.New password is accepted

Pre-condition:

1. user logged in

Exceptions:

- 2.a. Authorization fails
 - 1.Informs that user has typed the wrong password
 - 2.Allows to re-enter the password
 - 3.Resume basic flow at {4}
- 2.b. New password and confirm new password does not match
 8. Allows to re-enter the attributes
 9. Resume basic flow at {4}

3. Edit Profile

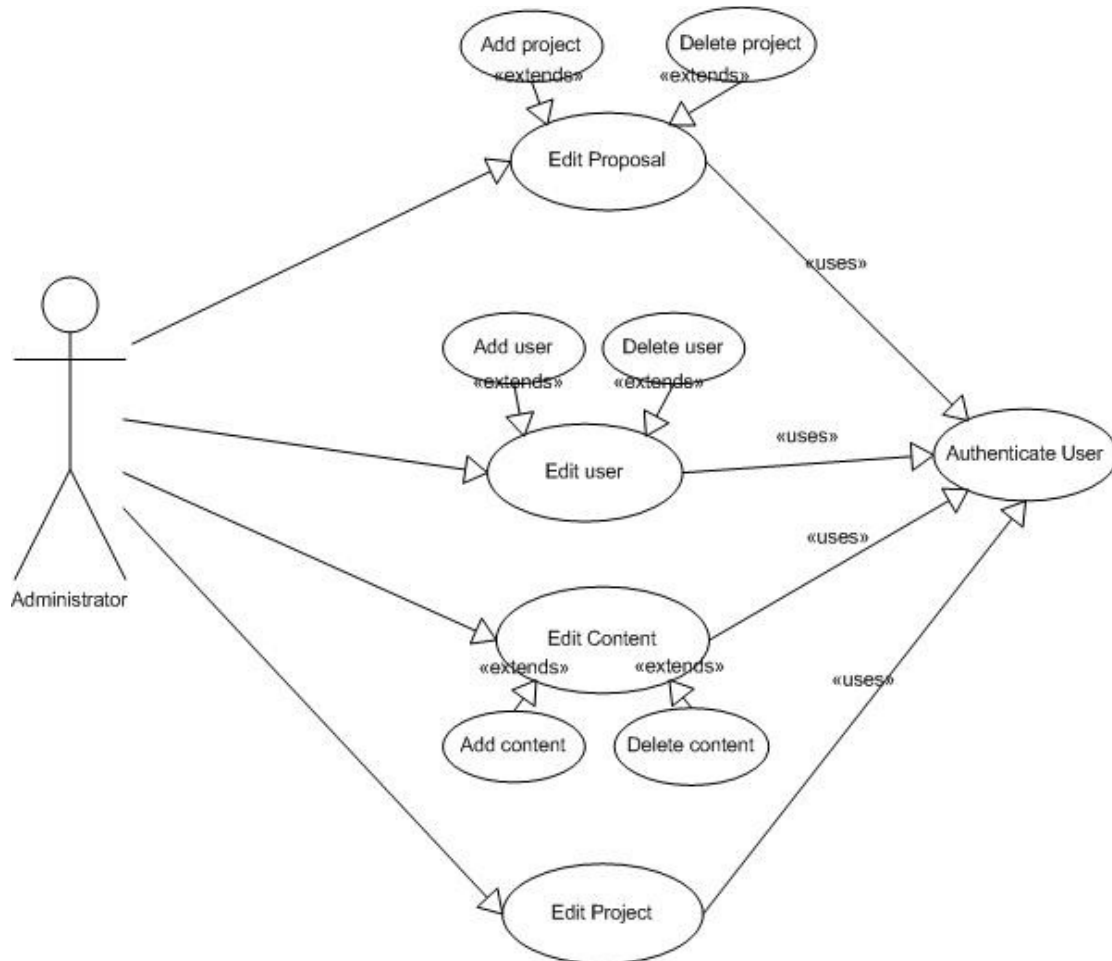
Basic Flow:

1. The use case starts when the Reviewer click on the "Edit Profile" from the system menu
- 2.Reviewer enters the details
- 3.System does the validation
- 4.System saves the details.

Pre-condition:

1. User logged in.

4)Use-Cases for Administrator



Detailed description

1. Edit Proposal

Basic Flow:

- 1.The use case starts when the Administrator click on the “Edit Proposal ” from the system menu.
2. Administrator enters the details.
3. System does the validation.
4. System saves the details.

2. Edit Project

Basic Flow:

- 1.The use case starts when the Administrator click on the “Edit Project ” from the system menu.
3. Administrator enters the details.
4. System does the validation.
5. System saves the details.

3. Edit Content

Basic Flow:

- 1.The use case starts when the Administrator click on the “Edit Content ” from the system menu.
2. Administrator enters the details.
3. System does the validation.
4. System saves the details.

4. Add User

Basic Flow:

- 1.The use case starts when the Administrator click on the “Add User ” from the system menu.
2. Administrator enters the details.
3. System does the validation.
4. System saves the details.

Pre-condition:

1. User logged in.